

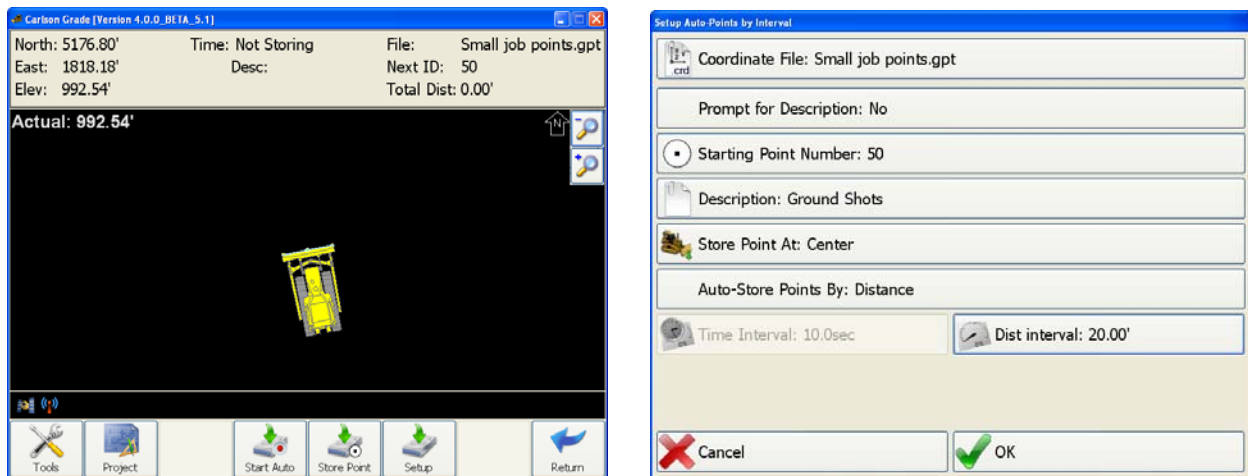
Quick Guide



Store Points

The Store Points routine allows you to capture points (Topo) by interval and/or by single shot. These stored points can be used later to design surfaces, calculate Cut/Fill volumes against another surface, etc.

Select the Store Points Button inside the Tools' menu of Carlson Grade followed by the Setup Button in the Store Points Toolbar.



You can configure the following settings inside the setup menu:

- **Coordinate file:** This allows you to select an existing or create a new .gpt (Grade point file) file to log coordinates to.
- **Prompt for Description:** Choose “Yes” or “No” to ask for description before storing point.
- **Starting Point Number:** Choose point number to begin with.
- **Description:** This allows you to enter a description for the points being logged.
- **Store Point At:** (Right Side, Left Side, Center, Tracks and Wheels) allows you to modify where you want to store the points at.
- **Auto-Store points By:** You can store points automatically relative to time or distance.
- **Time Interval:** This can be set to any time interval but will be ghosted if set to log by distance.
- **Dist Interval:** This can be set to any length but will be ghosted if set to log by time.



Start Auto: Will start the log function and run until you stop or pause it.



Store Point: This will store a single point at your current location.